

---

## General Notes

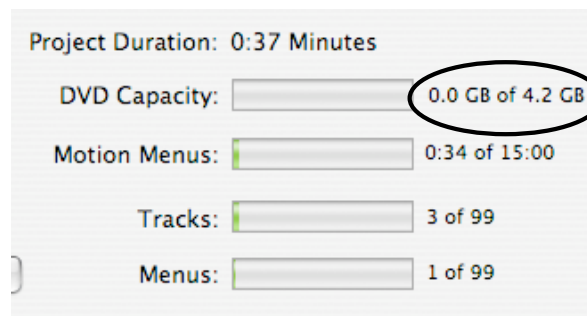
---

You can use the following **media types** to burn a disc in iDVD 6:

- ✓ **DVD-R:** *Can be used only once. This is the recommended media for iDVD, since it's compatible with most DVD players and computers on the market today. It can hold about 4.38 gigabytes (GB).*
- ✓ **DVD+R:** *Can be used only once. These discs can hold about 4.38 GB.*
- ✓ **DVD-RW:** *Can be used more than once. RW stands for "rewritable." These discs can hold about 4.38 GB.*
- ✓ **DVD+RW:** *Can be used more than once. These can hold about 4.38 GB. These discs may not be viewable in all DVD players.*
- ✓ **DVD+R DL (Double Layer):** *Can store almost twice as much content as single-layer discs, but cannot be viewed in older DVD players.*

Be sure to check your **DVD capacity**:

- ✓ See how much space is left in your iDVD project by going to **Project => Project Info...**



- ✓ Clicking the text on the right switches between disc space in gigabytes (GB), and time in minutes.
- ✓ **The project's size is limited by the size of the DVD disc.**

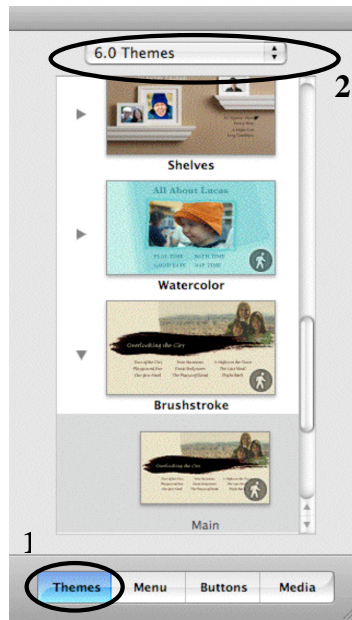


---

## Choosing a Theme/Design

---

1. Click the **Themes** button at the bottom of the iDVD window. The **Themes** pane opens on the right side of the iDVD window.

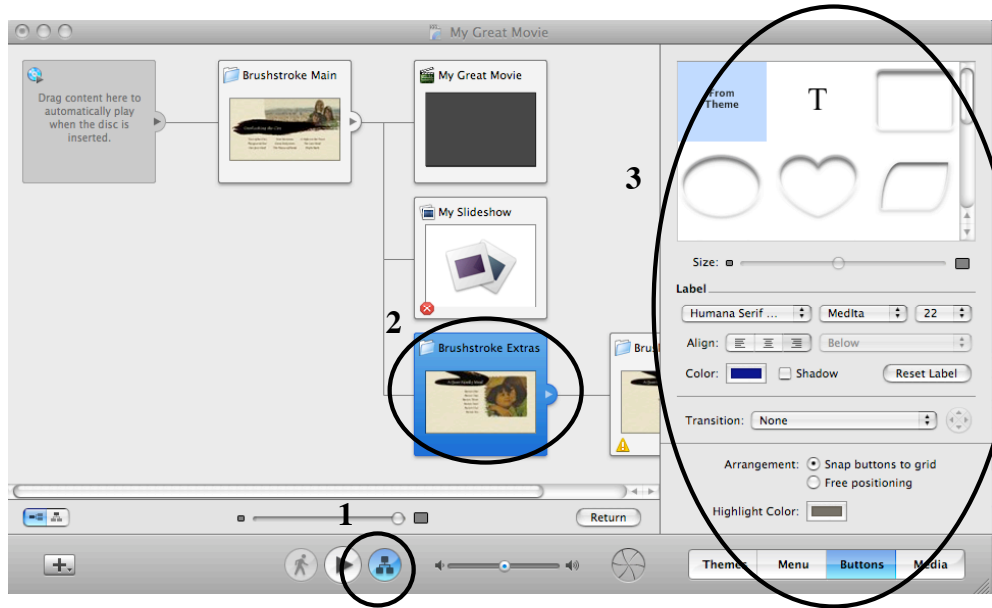


2. Move the scroller up and down to see the themes. Themes that contain animation and music have a **Motion icon** that looks like the **Motion button** in the bottom-right corner of the theme thumbnail.



3. Click the pull-down menu for more theme options.

4. You can edit or change the design on individual slides by clicking **Map view** and selecting a specific slide.



*Changing design on one slide does not change design on all slides.*

---

## Setting Chapters

---

1. Select one or more movies in your project.
2. Choose Advanced > "Create Chapter Markers for Movie."
3. Type a number of minutes or click the up and down arrows to specify the frequency of chapter markers in the movie.
4. Click OK.

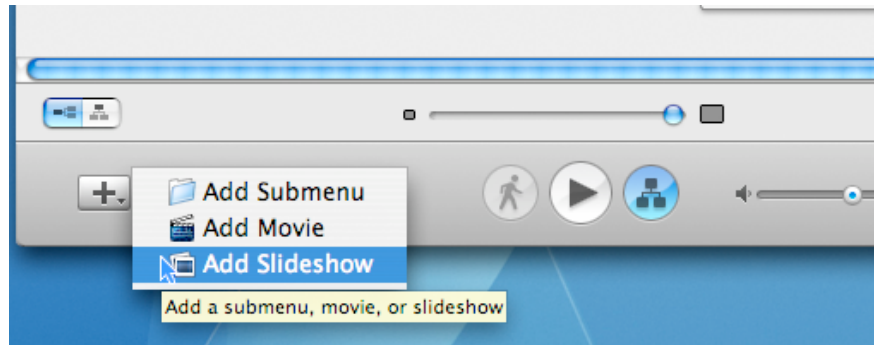
*Once chapter markers are placed, you can't change them. If you decide you don't want to use them, don't create a scene selection menu. Chapter markers are not visible to viewers unless you make them accessible.*

---

## Creating a Slideshow

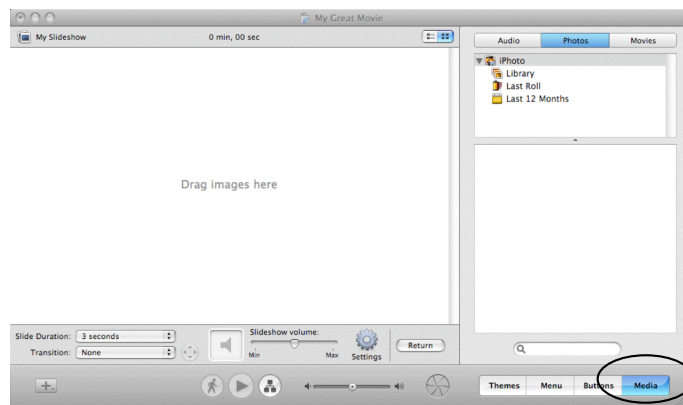
---

1. Click the **Add** button at the bottom of the iDVD window and choose **Add Slideshow** from the pop-up menu.



2. A button named "My Slideshow" appears on the menu. Click **My Slideshow** to select it and rename it.
3. Click outside the text area to deselect the text, then double-click the **My Slideshow** (now renamed) button to open the slideshow editor.

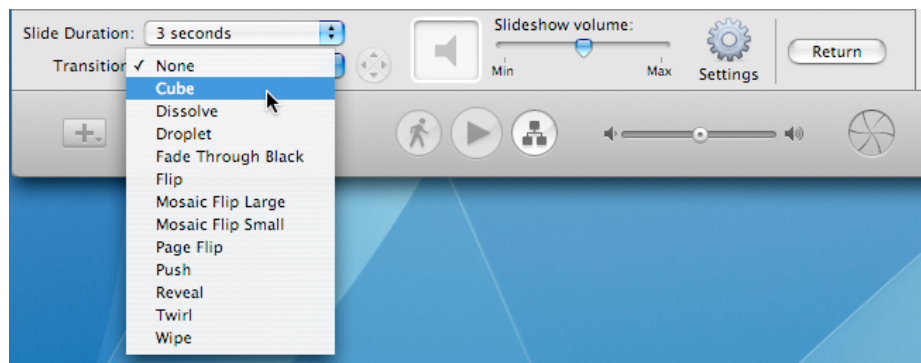
*The slideshow editor, shown below, is a blank screen with the words "Drag images here".*



1. If not already open, click the **Media button** to open the **Media pane**, then click the **Photos button** at the top of the Media pane.

# DC Tip Sheet

2. Drag photos one at a time or in groups from the images list to the slideshow editor. You can even drag a whole album to the slideshow editor.
3. Arrange the images in the order you want them to appear. Drag the images in the slideshow editor to arrange them.
4. To delete images, select the ones you want to remove and press the **Delete** key on your keyboard.
5. Add a transition so the images in your slideshow flow smoothly from one to the next. Click the Transition pop-up menu and experiment with the transitions in the menu until you find one you want to use.



6. Click the Audio button at the top of the Media pane to add a soundtrack for your slideshow.

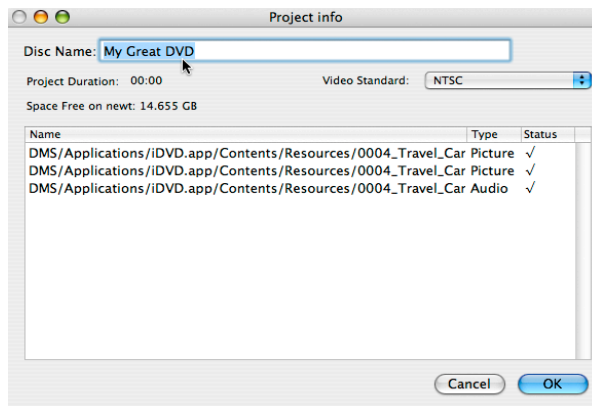
---

## Naming Your DVD

---

*By default, the name of the final DVD matches the name of your iDVD project. You can change the disc name so the final burned disc has a different name.*

- ✓ Choose **Project => Project Info**. Type the new name in the Disc Name box.




---

## Burning Your DVD

---

Be sure to preview and save your project before you burn it to disc.

### Previewing a project:

1. Click the **Map** button (B in the illustration below) and look at the icons to see if any warning symbols appear. If they do, move the pointer over the symbol to read the error message.
2. Make any necessary adjustments to project assets that have warnings.
3. Click the **Preview** button (A in the illustration below). Use the arrow buttons on the remote control to select a button and then press Enter. (You can also click the buttons directly on the DVD menu using your pointer.) When you activate a button, the movie or slideshow it links to plays. When a movie is finished, you see the DVD menu again.

# DC Tip Sheet

4. Use the Next button on the remote control to advance through the slides in a slideshow or chapters in a movie. Click the Menu button to return to the DVD menu.
5. When you are done with your preview, click the Exit button on the remote control.

## Burning your DVD:

1. Click the **Burn** button at the bottom of the window to indicate you are ready to burn.



2. When prompted, insert a recordable DVD disc into the drive.

*If you insert a rewritable disc (DVD-RW or DVD+RW) that isn't blank, iDVD asks whether you want to erase the disc.*